

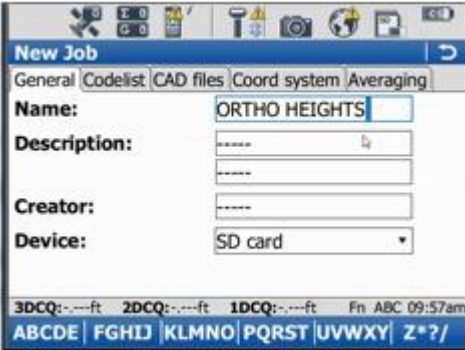


Coordinate Systems and Geoids

Attaching a Geoid to a coordinate system

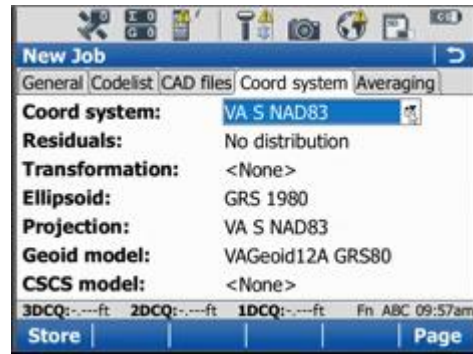
Orthometric Heights and Geoids

Summary – Attaching a Geoid to a Coordinate System

<p>Step 1- Main Menu</p> <p>Select Jobs and data</p>	
<p>Step 2- New Job</p> <p>Select New Job</p>	
<p>Step 3- New Job</p> <p>Type in the Name of the New Job</p>	

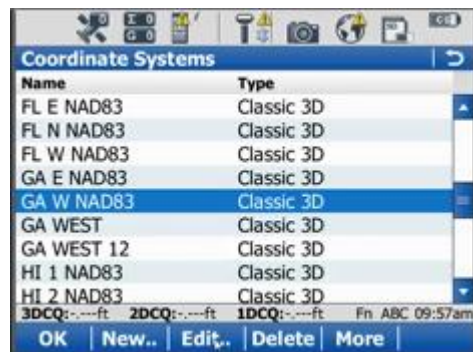
Step 4- Coordinate System

Select the desired Coordinate System from the Drop Down Menu



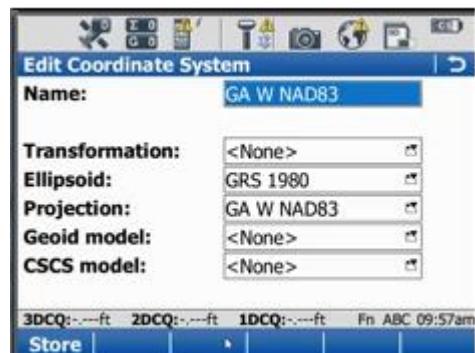
Step 5- Coordinate System

Choose the Coordinate System and Select F3 Edit



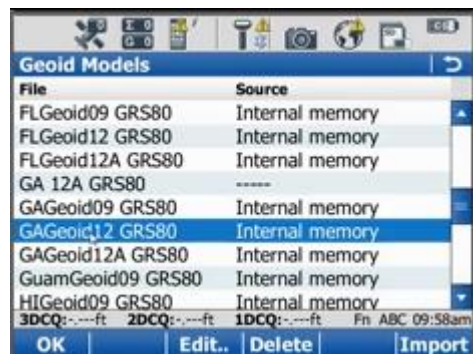
Step 6- Coordinate System

Note the Geoid Model is not Selected
Selected the Pull Down Menu for the Geoid Model



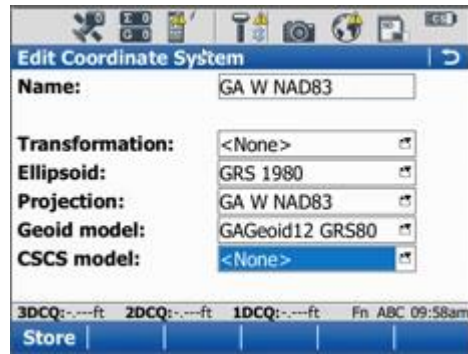
Step 7- Geoid Models

Select the Desired Geoid Model to Attach to the Coordinate System



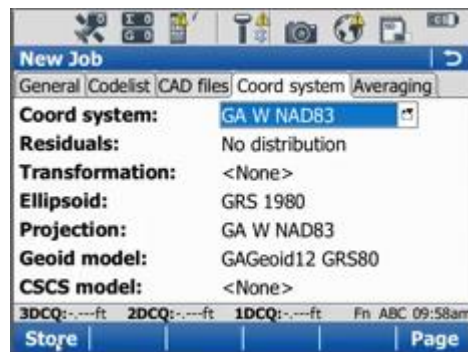
Step 8- Coordinate System

Note the Geoid is now attached to the Coordinate System



Step 9- New Job

Select F1 Store and the New Job will be saved with the Desired Coordinate System



Step 10- New Job

To review the Coordinate System



Step 11- Jobs and Data

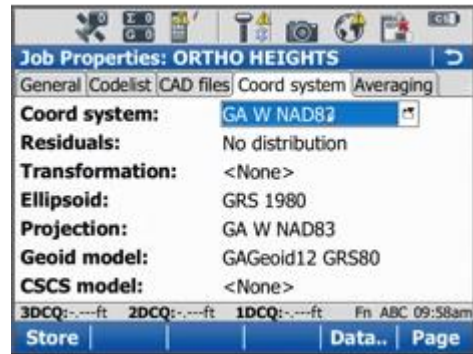
Select Job Properties



Step 12- Job Properties

Adding a geoid can be done:

Before, During and after a job is completed and when the Geoid is Attached the Orthometric Heights will be Displayed



Step 13- Main Menu

We are now ready to

Start our Survey

