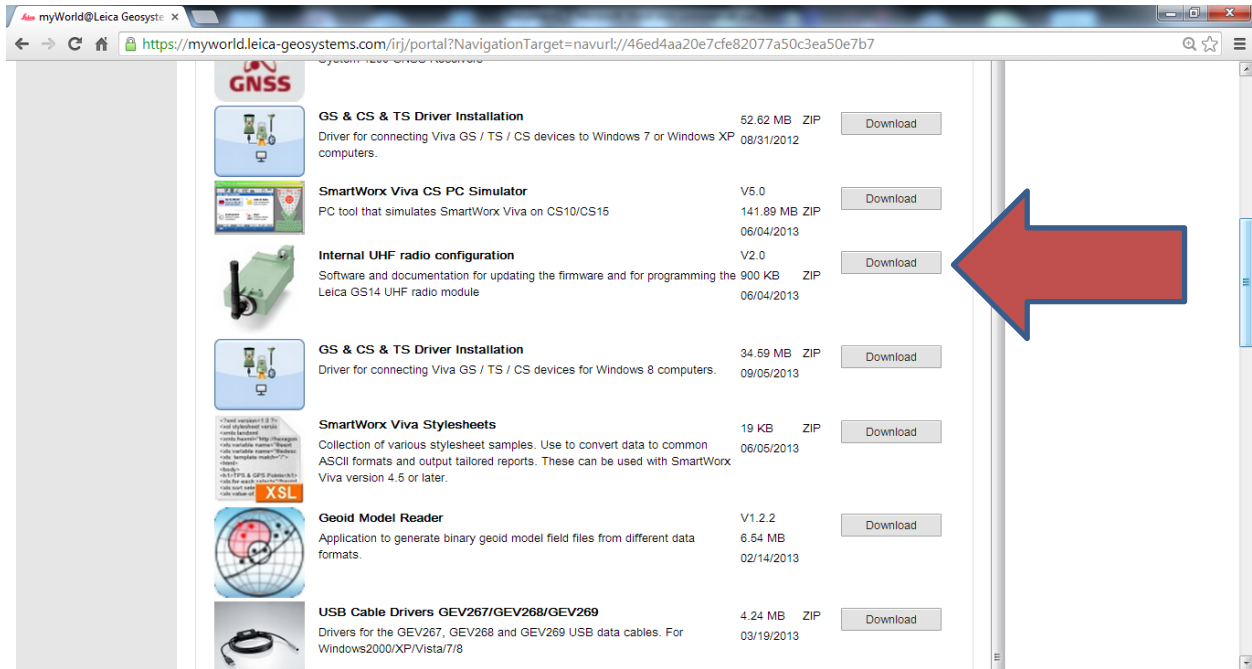


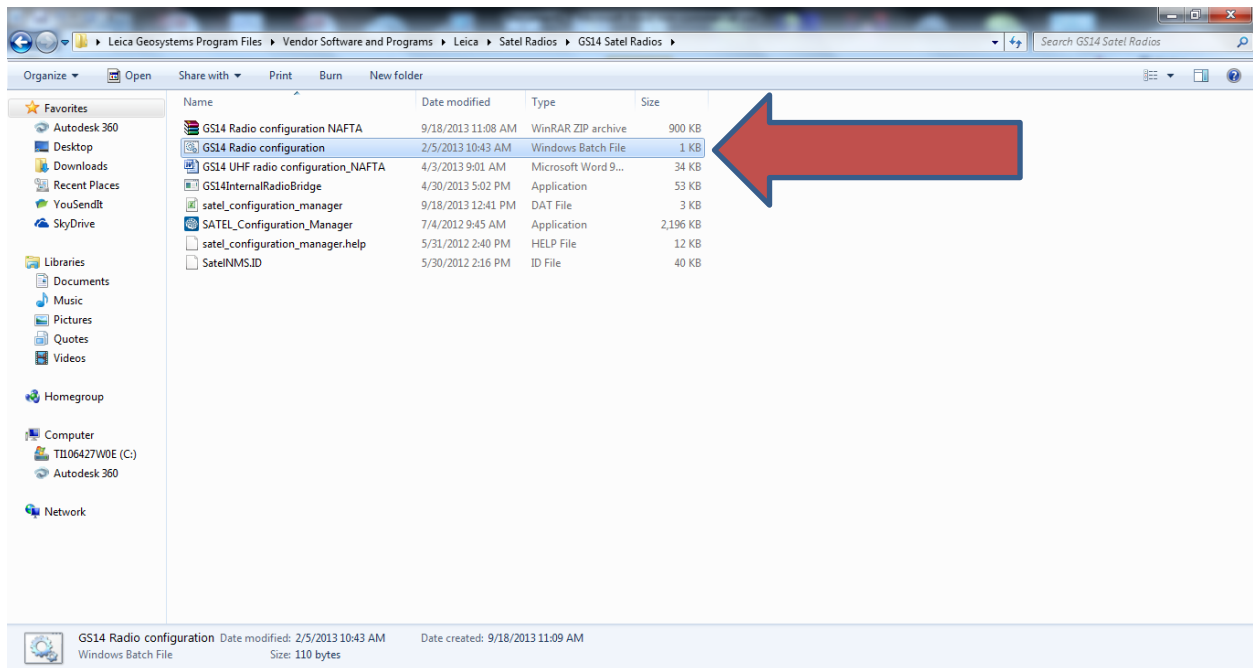
GS14 Satel Radio Programming Procedures

Configuring the GS14 internal Satel radio. You will need to download the GS14 Radio Configuration NAFTA from myworld.leica-geosystem.com located under the GS14 Tools tab. Save file to its own folder and extract .zip file in that folder.

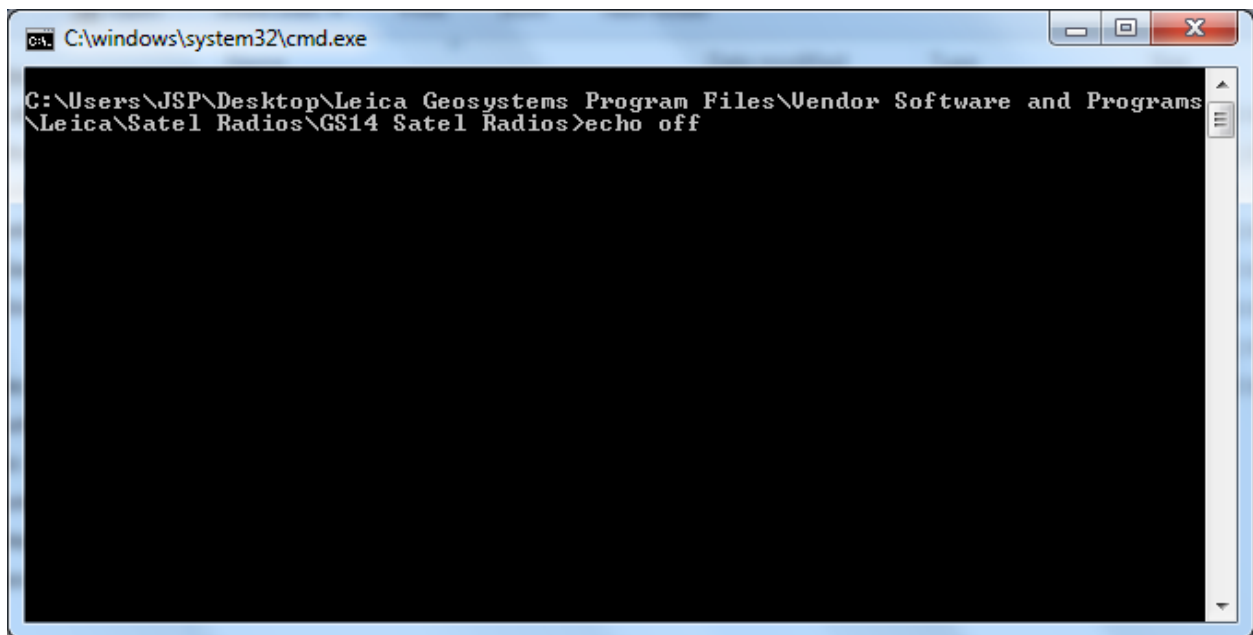


You will also need to be sure you have the GS/CS Drivers already loaded on your PC. You can check this by connecting the GS14 to your PC with the GEV234 cable and after windows mobile device center connects, open a web browser and type in the address window (192.168.254.1). You should see the web interface if everything is working properly.

Leave the GEV234 connected to GS14 and PC for this next step.

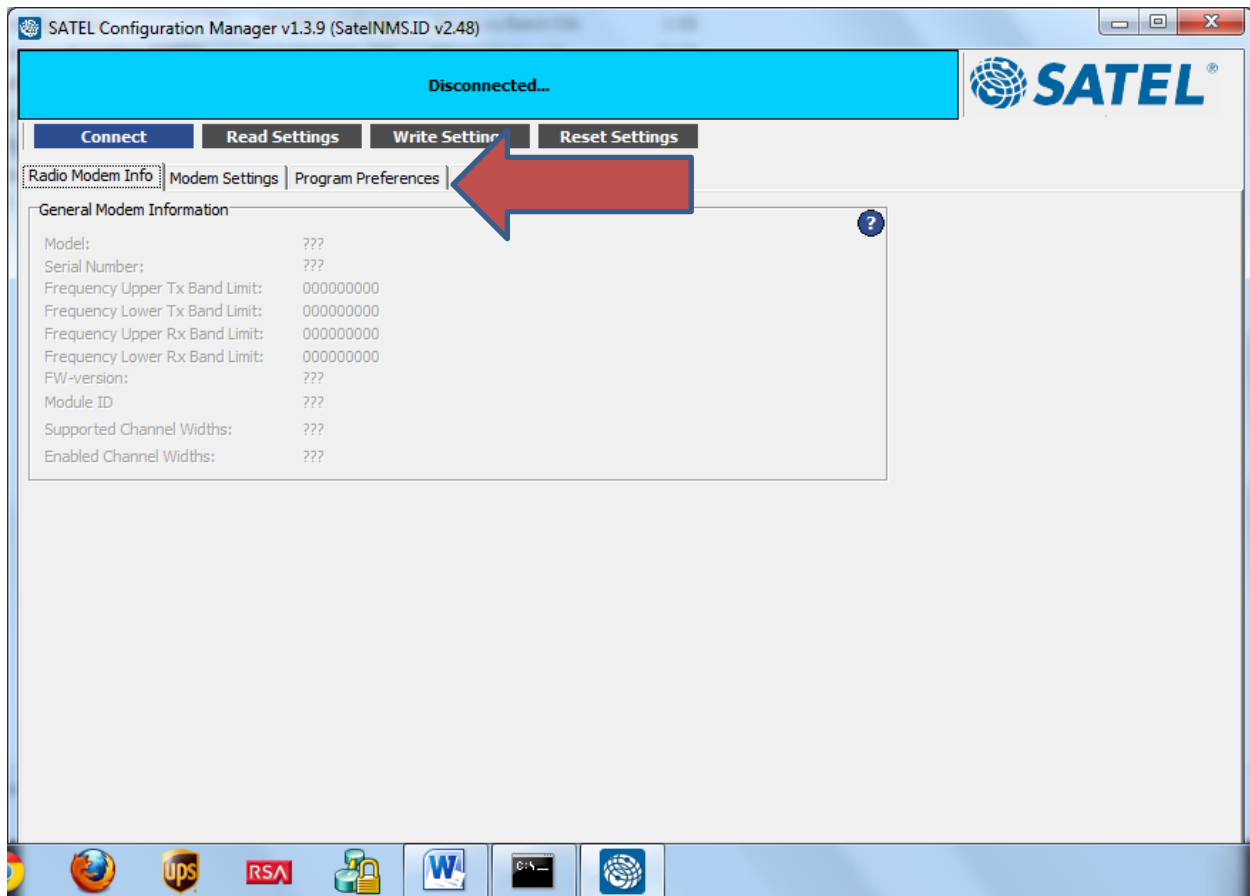


After clicking on the Batch file above, a DOS screen will appear and configure the baud rate and open ports.



It will also start the Satel Configuration Manager automatically. After the Satel Configuration Manager starts, you will at this point disconnect the GEV234 USB cable and connect the GEV162.

Note: It is important to have an express card slot on your PC and a 9pin express card adapter for this to work properly.



It is important to click over to the Program Preference tab to make sure the baud rate is set to 38400.

