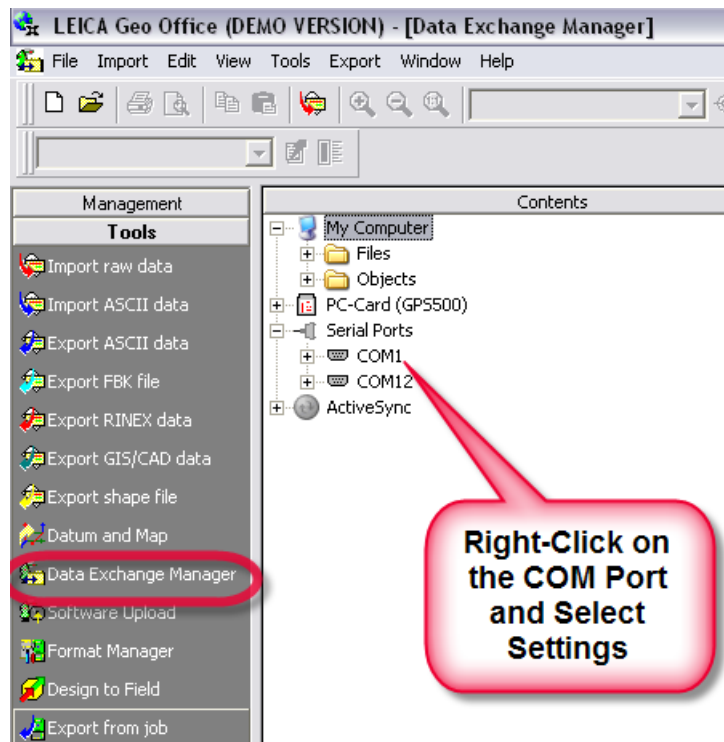




RE: Transferring Format Files to Leica Instrument – Focus on DNA Level Series

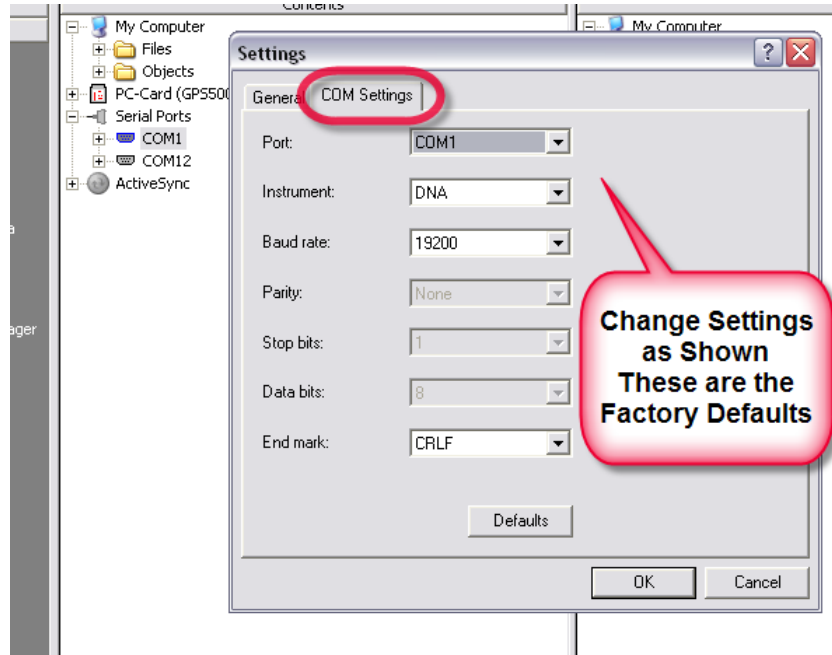
1. Open LGO or LGO Tools and select the Data Exchange Manager application from the Tools menu. Connect the DNA level to the appropriate COM port on your PC with the GEV102 cable (Art. No. 563625 Small 5-pin lemo to 9-pin serial RS232 serial) and make sure that the DNA has a charged battery placed in it. Once the Data Exchange Manager is open, expand the Serial Ports section in the left pane of the view and right-click on the needed COM port listing. A menu will appear and you should select Settings... from this menu.



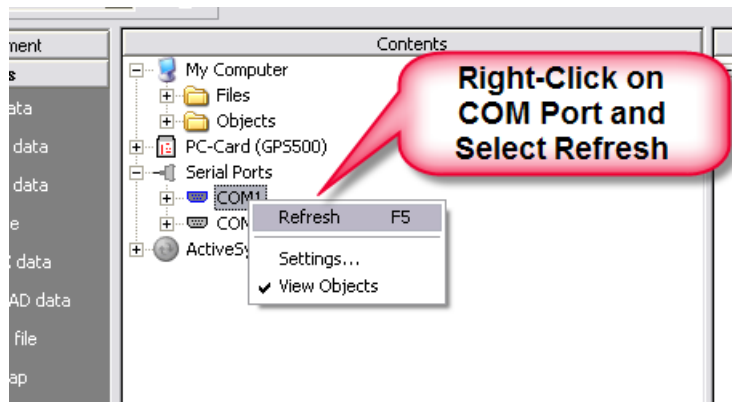
2. Once you have selected Settings from this menu, the Settings dialogue box will appear. Select the COM Settings tab and change the port settings as shown in the image. The default settings should be:

Instrument = DNA
Baud rate = 19200
End Mark = CRLF

Next select OK to accept the settings

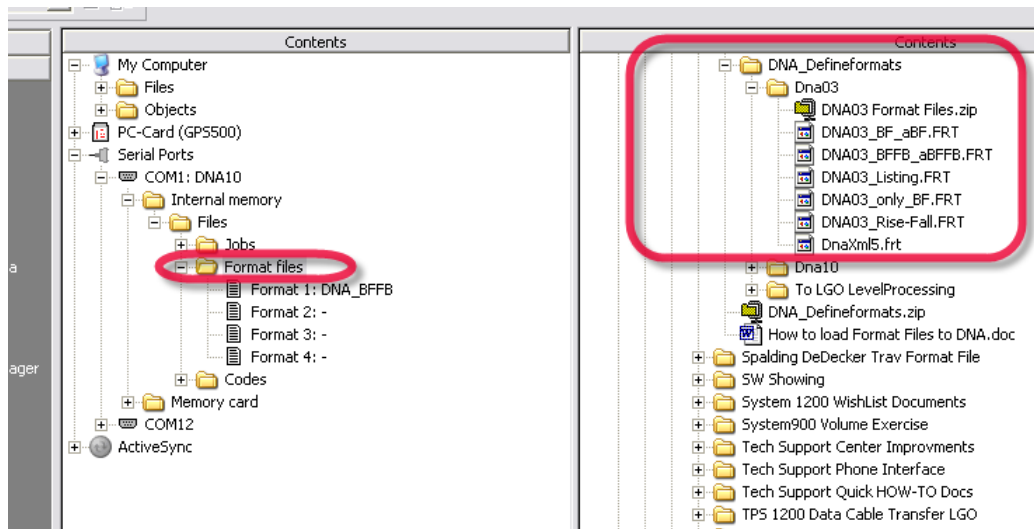


3. You will now establish the communication link with the DNA. Go back to the COM port listing and again right-click on the appropriate COM port. This time select Refresh from the menu.

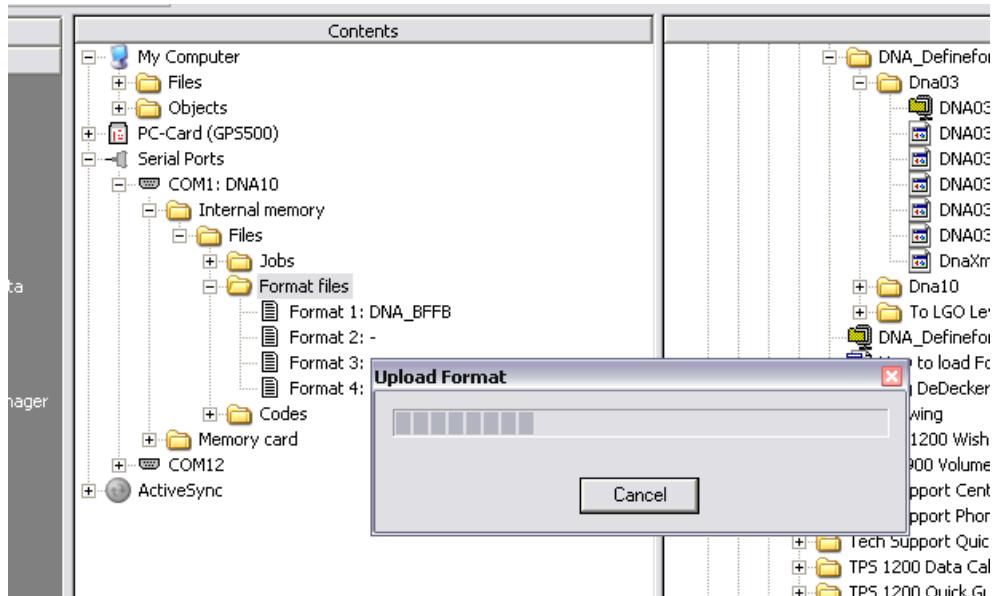


- The PC will now connect to the DNA and the COM port name should now appear as in this example COM1: DNA10. This means that the connection was successful. Next, you can start viewing the contents of the DNA. Expand the view of the contents until you see Format Files. Expand this and now notice that the DNA can hold up to four (4) different format files. If all four of your memory slots for format files are full, right-click on the one you do not intend to use and select Delete for the menu that appears.

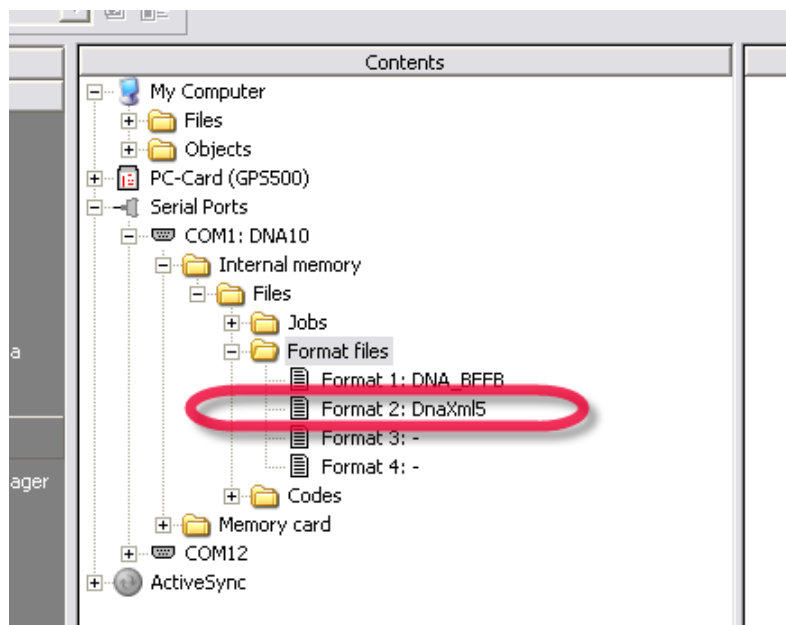
To prepare for transferring the format file you must be able to view the file in the right pane of the interface. The right pane of the interface is just a listing of what is stored on your hard drive. Navigate to the folder on your hard drive that contains the desired format file. In this case we want to locate the file DnaXml5.frt.



- The transfer process is easy. Just select the file in the right pane with your left mouse button, keep holding the left mouse button, and drag and drop the file onto an empty slot in the Format File area in the left pane (which is your view of the DNA). The file will take a moment to load and you will see a progress bar during this process.



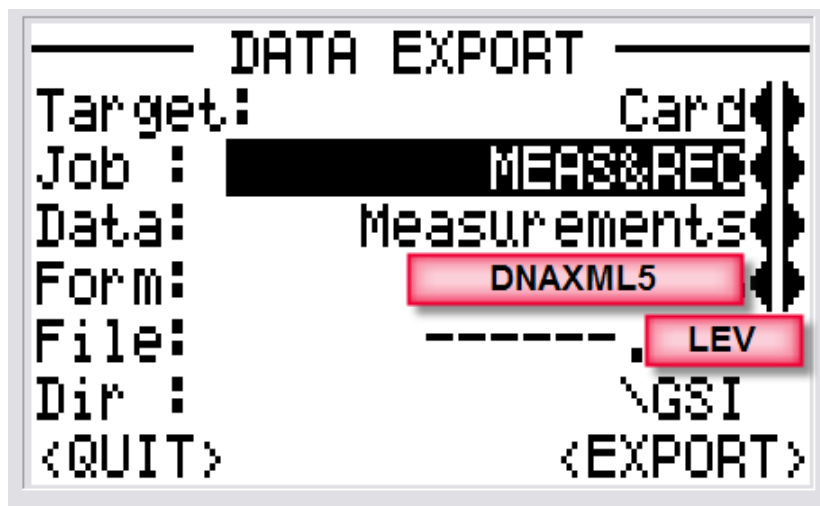
- Once the transfer is complete you will see that the format file now resides on the DNA. The transfer process for the format file is now completed.



7. Now when you want to export data on the level, select the DATA key and then select 4 – DATA EXPORT from the menu.



8. You can now export the level data in an XML format that will allow the full transfer of all of the values held in the DNA database. The first time you use this format file you will need to select the DnaXml5 format file in the Form: field. You will also need to change the extension given to the file to LEV (only for the first time that you use this format file). Once you have done this, export the data in the usual manner. The .LEV file will be placed in the GSI folder on the PCMCIA card if you leave the folder shown in the Dir: field to \GSI.



9. It is now important that once you import data from the DNA that used the DnaXml5.FRT file you must change the Files of Type: field to DNA 03/10 raw data (*.lev) in the Import Raw data window.

