



# Leica ScanStation C10



Remote Control via Apple iPad

- when it has to be **right**

*Leica*  
Geosystems

# Leica ScanStation C10

## Remote Control via Apple iPad

### Prerequisite

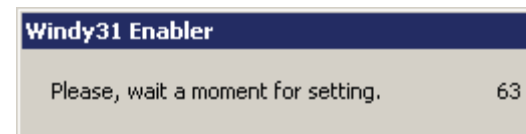
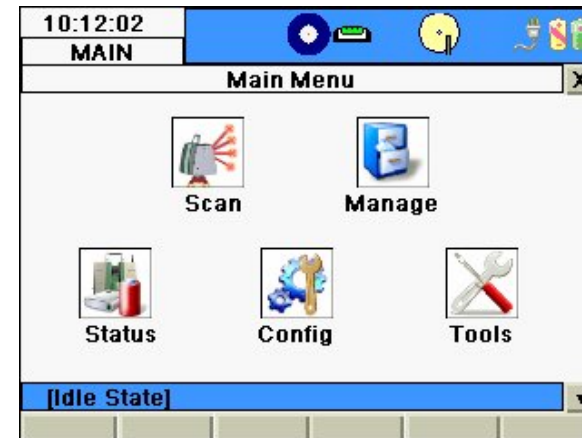
- Leica ScanStation with FW 1.200 or higher installed
- Windy 31 WiFi adapter
- Apple iPad with free app RDP Lite installed




# Leica ScanStation C10

## Remote Control via Apple iPad

- Start the Leica ScanStation C10 and wait for the boot process to finish.
- The message bar should switch from „Calibrate State“ to „Idle State“.
- When the message bar shows „Idle State“ then connect the Windy 31 WiFi adapter.
- Wait for the scanner to find the WiFi adapter.



 For details about the C10 wireless communication refer to the Leica ScanStation C10 System Field Manual, chapter 9.4 Status\WiFi

3

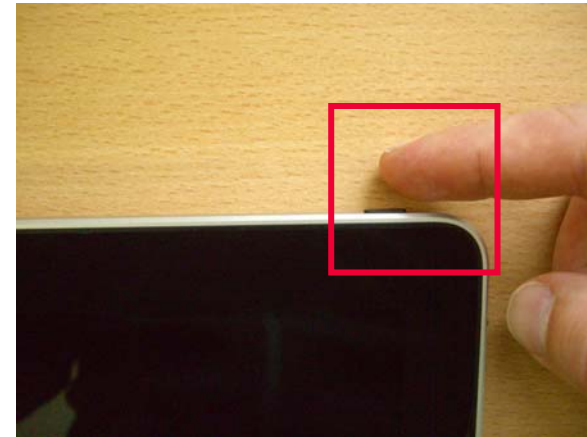
- when it has to be **right**

**Leica**  
Geosystems

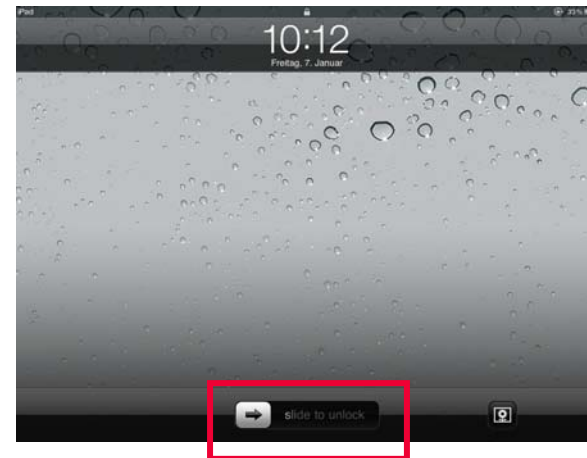
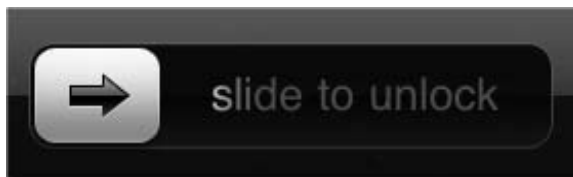
# Leica ScanStation C10

## Remote Control via Apple iPad

- Start the Apple iPad by pressing the ON/Off button



- Unlock the system



# Leica ScanStation C10

## Remote Control via Apple iPad

- Select „Settings“ to define the correct WiFi settings.



# Leica ScanStation C10

## Remote Control via Apple iPad

- In „Settings, WiFi“ select the network „Leica C10 126xxxx WiFi“ with 126xxxx being the scanner's serial number.



# Leica ScanStation C10

## Remote Control via Apple iPad

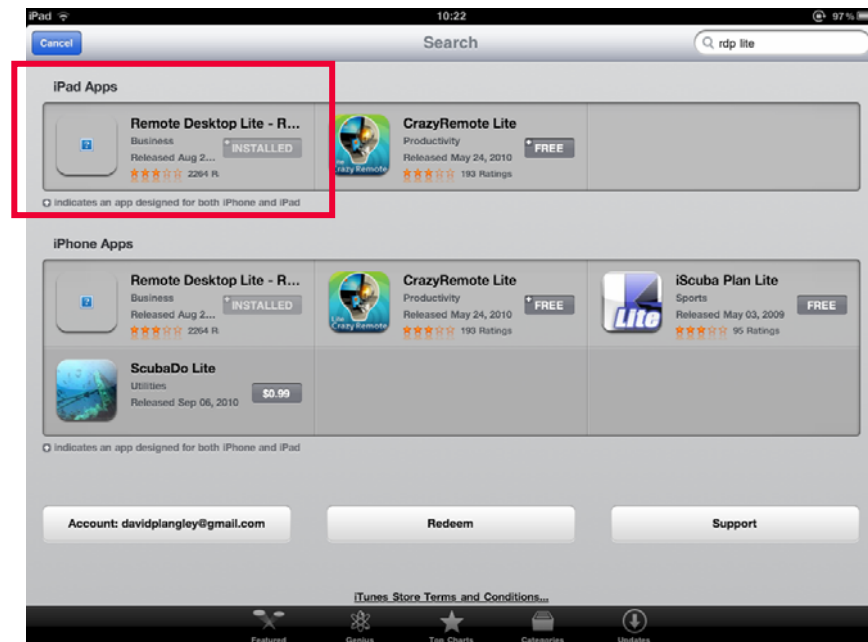
- The details of this network should be as listed in the screenshot.



# Leica ScanStation C10

## Remote Control via Apple iPad

- Install the free app Remote Desktop Lite (RDP Lite).
- It provides access to a PC running Windows XP Professional or Vista/Windows 7.
- In the App Store search for „rdp lite“ to find it.
- [www.mochasoft.dk](http://www.mochasoft.dk)





# Leica ScanStation C10

## Remote Control via Apple iPad

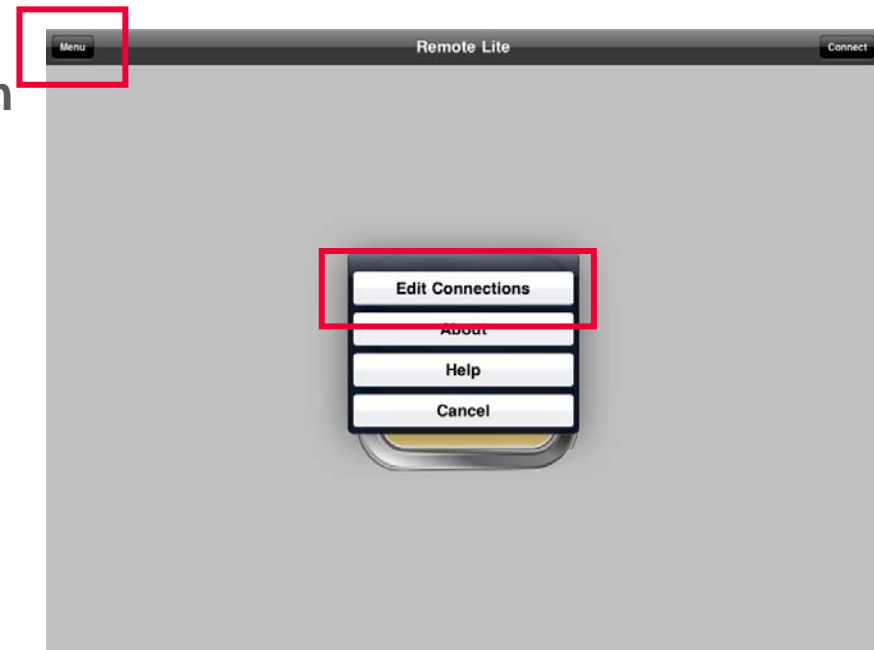
- Start the free app „RDP Lite“



# Leica ScanStation C10

## Remote Control via Apple iPad

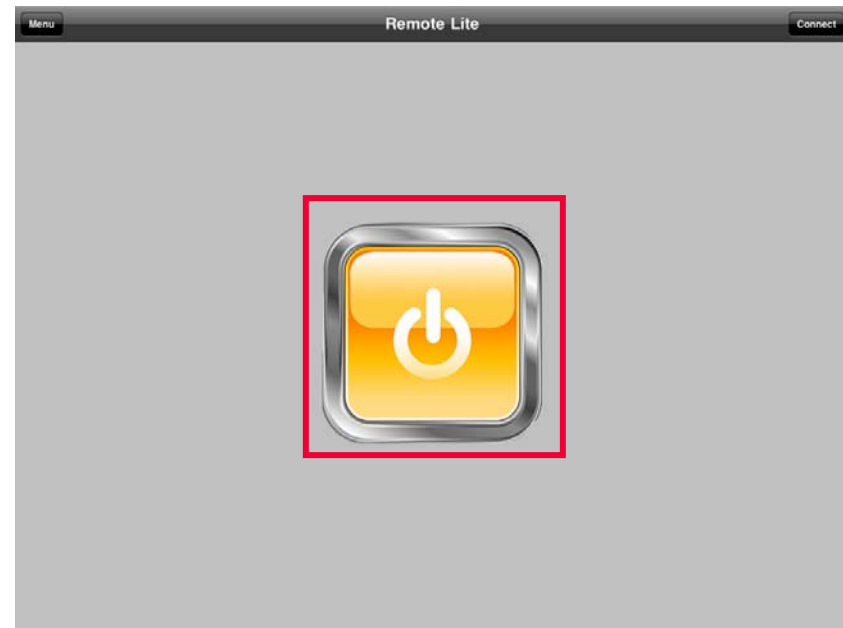
- In „Remote Lite“ select „Menu“ and go to „Edit Connections“.
- In „Host List“ create a connection with
  - Windows Workstation IP address = 192.168.33.1
  - Windows Workstation Port = 3389
  - User (optional) = sbc
  - Password (optional) = sbc



# Leica ScanStation C10

## Remote Control via Apple iPad

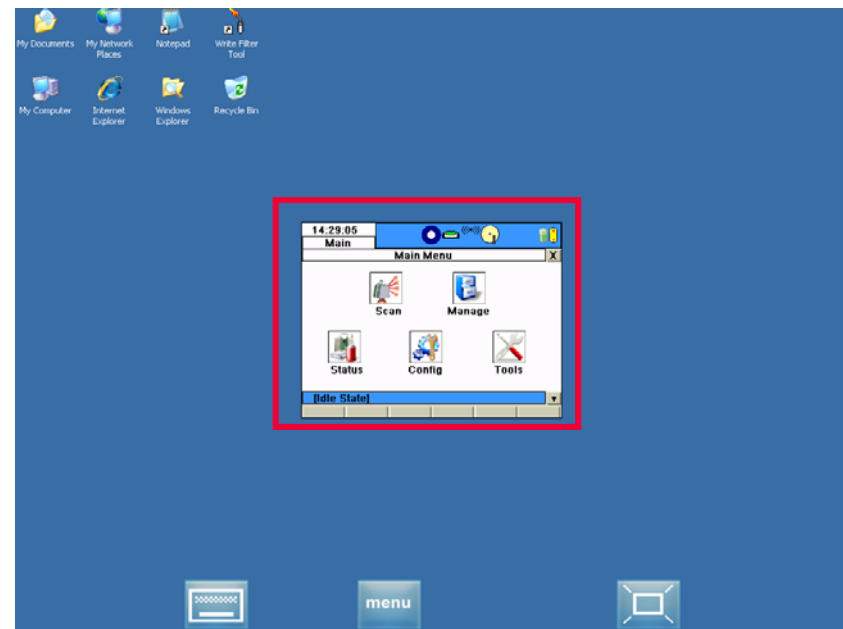
- In „Remote Lite“ press the start button to connect.



# Leica ScanStation C10

## Remote Control via Apple iPad

- After some seconds the entire ScanStation C10 window with the active MMI is displayed.



# Leica ScanStation C10

## Remote Control via Apple iPad

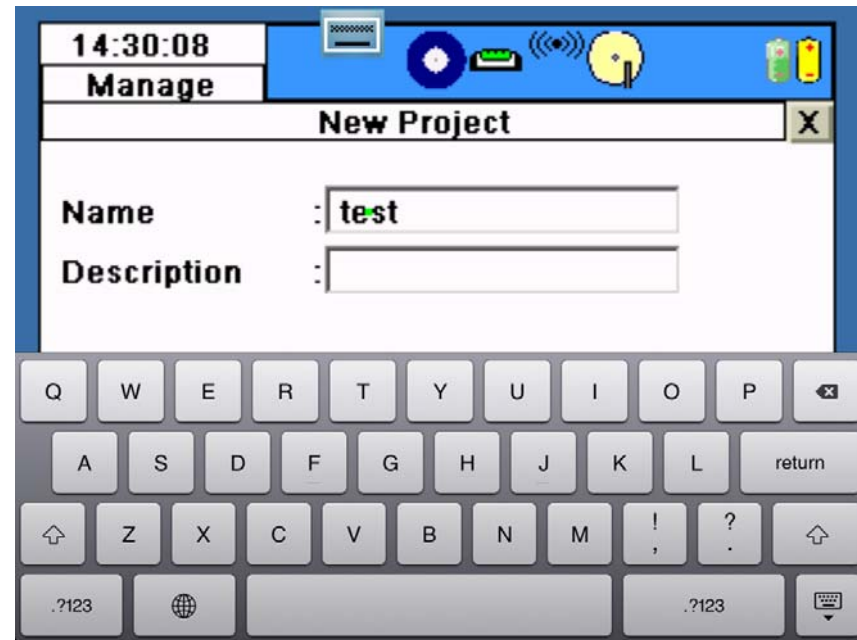
- Use the iPad finger command to enlarge the MMI to any size.
- The C10 is now ready for remote control via iPad touchscreen (the little green dot represents your point of selection).



# Leica ScanStation C10

## Remote Control via Apple iPad

- When numeric/alphanumeric MMI input fields are selected
  - the default MMI virtual keyboard can be used or
  - the iPad virtual keyboard can be used by pressing



# Leica ScanStation C10

## Remote Control via Apple iPad

- The app Remote Desktop Lite (RDP Lite) also works on the Apple iPhone.



- Hence this combination can also be used to control the Leica ScanStation C10.

